



HUNTERS[®]
HERE TO GET *you* THERE



3



1



Cobden Rise, St. Catherines Road,
Southampton
Per Calendar Month £1,300 Per Calendar Month



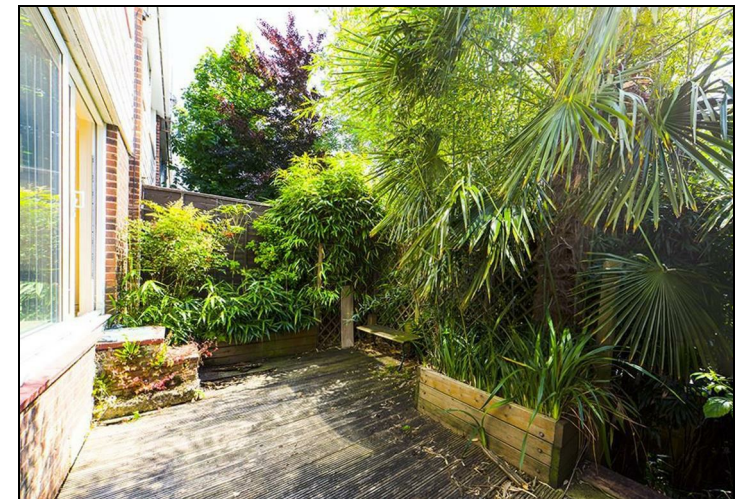
A delightful end of terrace house available in the popular location of Bitterne Park. The property comprises entrance hall, good size kitchen, living room with built in shelving units, three bedrooms, modern bathroom and rear garden. Benefits include off road parking, double glazing, side and rear access and gas central heating. The house conveniently located near to local amenities, bus stops, Riverside Park and is offered unfurnished

35 Bedford Place, Southampton, Hampshire, SO15 2DG | 02380 987720
southampton@hunters.com | www.hunters.com

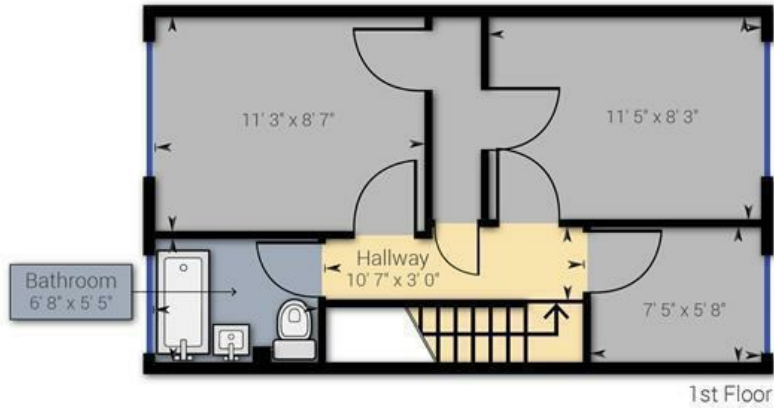
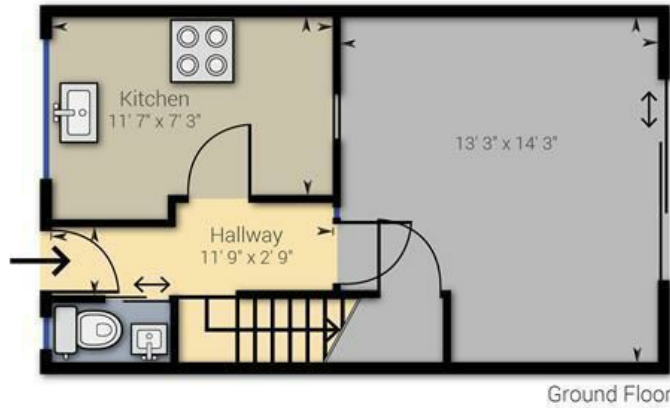


KEY FEATURES

- Three bedroom house
 - Off Road parking
 - Side and rear access
- Convenient location for Bittern Park Primary School catchment
 - Unfurnished
 - White goods
- Holding deposit £311.53
- Full security deposit £1,557.69
 - EPC: C (71)
 - Council tax: B



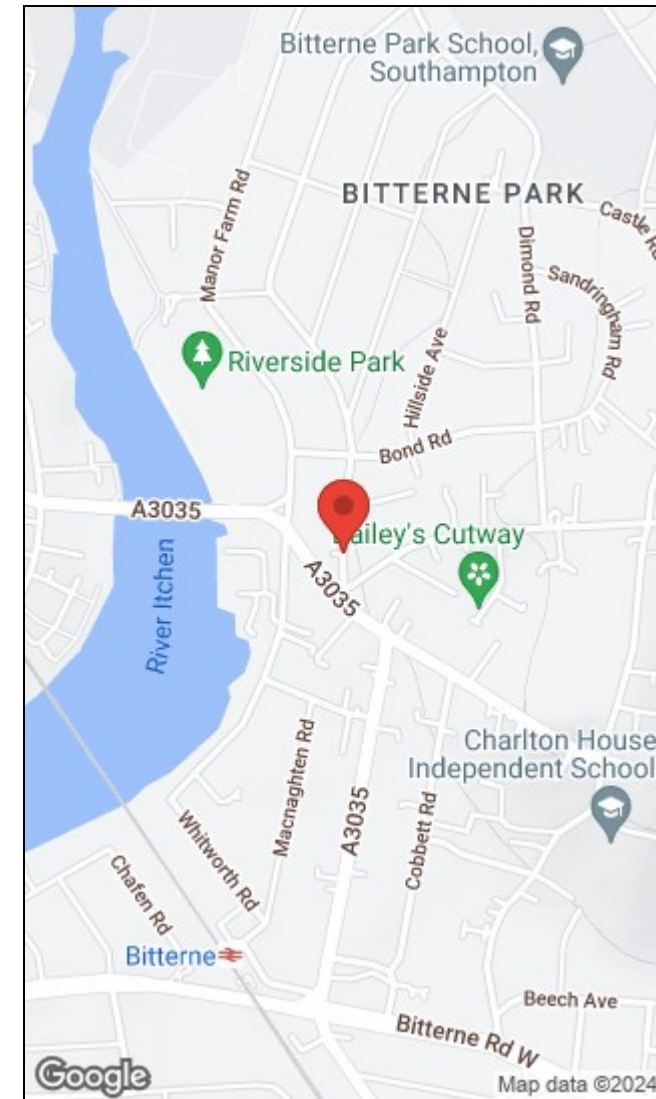




Approximate net internal area: 685.76 ft²

While every attempt has been made to ensure accuracy, all measurements are approximate, not to scale. This floor plan is for illustrative purpose only and should be used as such by any prospective tenant or purchaser.

Powered by Giraffe360



Energy Efficiency Rating		Environmental Impact (CO ₂) Rating	
Current	Potential	Current	Potential
	86		
71			

Energy Efficiency Rating		Environmental Impact (CO ₂) Rating	
Current	Potential	Current	Potential
A	A	A	A
B	B	B	B
C	C	C	C
D	D	D	D
E	E	E	E
F	F	F	F
G	G	G	G

England & Wales | EU Directive 2002/91/EC

35 Bedford Place, Southampton, Hampshire, SO15 2DG | 02380 987720
 southampton@hunters.com | www.hunters.com



This Hunters business is independently owned and operated by Clegg Properties Ltd | Registered Address: Frenchfield, 23 Solent Avenue, Lymington, Hampshire, SO41 3SD | Registered Number: 6421594 England and Wales | VAT No: 188 0548 76 with the written consent of Hunters Franchising Limited.